

# CCSP 2007

## The Right Choice for Better Planning

**More Data • New Tools • Improved Functionality • Updated Interface**

### A New Era for Community College Planning

More than ever, community colleges are being asked to ensure that their region's workforce is prepared for the demands of an ever changing economy. This requires access to integrated, up-to-date, and regionalized data.

To help colleges respond, CCbenefits has developed a ground-breaking version of the CCSP. The new CCSP comes equipped with the new Educational Analyst module and updated versions of Career Pathways, Economic Forecaster and Economic Impact. With these new and improved modules colleges will have access to labor market projections, program review tools, career cluster tools, career pathways/worker transitioning tools, IPEDS institutional comparisons, input-output modeling, and more!

In addition, our new modular structure and affordable pricing lets you customize so that you get exactly what you need.

### CCSP 07 Highlights

- Match programs to labor market data and projections to conduct program review and explore new program development
- Analyze the local labor market in terms of career clusters for Perkins compliance
- Compare your college to peers with our user-friendly IPEDS interface
- Get to know your potential students with regional educational attainment and high school graduation data
- Analyze regional skill gaps and plan for worker transitioning / rapid response scenarios
- Become a leader in regional economic development with powerful economic modeling and industry cluster analysis.

### What's Included in the New CCSP?

#### **NEW! Educational Analyst** Module

- Analyze and rank programs by corresponding regional job growth.
- Find potential new programs serving high growth and high wage occupations.
- Create and edit custom programs; compare your college to a group of peer institutions.
- Organize regional career cluster data and run reports for the individual clusters.
- Find educational attainment and high-school graduation rates/demographics.

#### **Updated! Career Pathways** Module:

Address dislocated worker scenarios, forecast training needs, prepare the workforce for new regional industries, and give guidance to individual students and workers regarding their skills and employment options.

#### **Updated! Economic Forecaster** Module:

Project jobs by industry and occupation for up to ten years into the future. Produce quick reports on the current and projected growth and decline of industries and occupations. View the top industries/occupations, unemployment, and staffing patterns for your region.

#### **Updated! Economic Impact** Module:

Construct regional input-output models to prepare for the ripple effects of regional economic changes. Conduct regional cluster analysis.

#### **For more information or a free demo:**

Gabe Rench  
gabe@ccbenefits.com  
208.882.3567 ext. 107

Luke Jankovic  
luke@ccbenefits.com  
208.882.3567 ext. 123

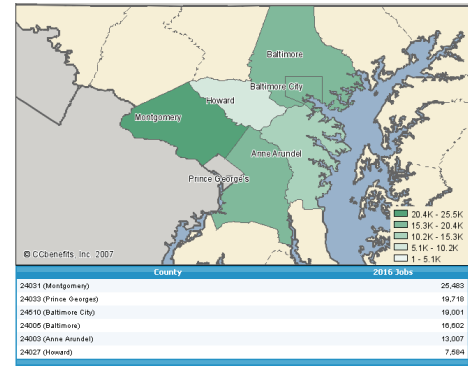
# CCbenefits' Educational Analyst

## A revolutionary new web-based module for community colleges

### Peer Comparison

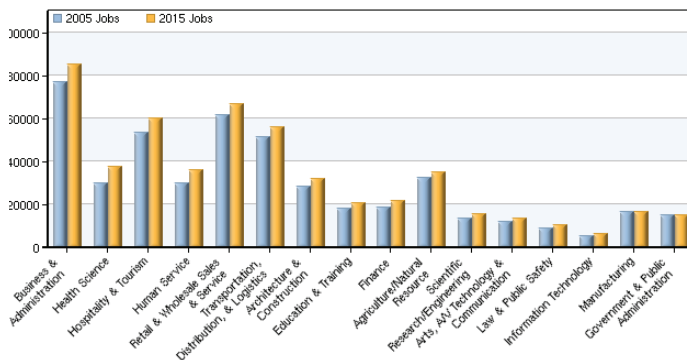
- Compare your college to a group of peer institutions using IPEDS.
- Generate student, financial, faculty/staff and institution reports.
- View your college's graduate and retention rates.

### Program Evaluation



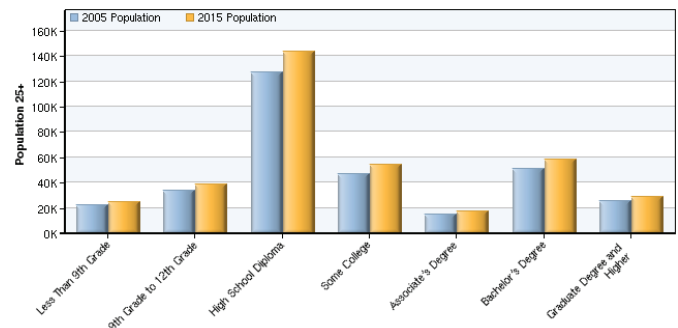
- Analyze and rank programs in terms of local job growth and high-wage/high-growth occupations.
- Search for programs mapped to high growth occupations.
- Create and Edit custom programs by CIP and TOP.

### Career Clusters



- View and organize occupational data in terms of career pathways and career clusters.
- Produce reports and analysis for individual career clusters.
- Rank career clusters by projected growth, occupation concentration and regional competitiveness.

### Education Capital



- View and generate custom reports on educational attainment by ethnicity and gender.
- View and generate custom reports on high school graduations by ethnicity and gender.
- Generate a detailed report on the educational attainment of a specific demographic group.
- Create an overview of high school graduations for your service area