



## Need a powerful network tool?

The rapid popularization and wide application of networks, including in E-Commerce, E-Government, networked offices and other modern uses of information, offers opportunities to enterprises for faster development. However, while people are enjoying convenience and profits brought by networks, many are also suffering because of low network efficiency, problems and breakdowns, which may seriously damage an enterprise's operations and can result in incalculable loss.

As security management and performance maintenance become more and more important, network engineers and administrators are facing the problem of how to improve network efficiency and availability. Also, due to the rapid development of network technology and an equally rapid increase in network infrastructure complexity, it is more difficult than ever before to implement network set-up and maintenance. A good network tool, like Javvin Packet Analyzer, can help administrators to troubleshoot network problems when these occur.

## Get help from Packet Analyzer!

Packet Analyzer is a powerful yet easy to use network monitor and protocol analyzer designed for packet decoding and network diagnosis. It can help network administrators to fulfill security management, network maintenance, network debugging, protocol analysis for network performance optimization and network availability enhancement.

With Packet Analyzer, you can monitor and analyze in real time all information communicated via a network, including LAN and WAN, from 10/100 Mbps Ethernet to the newest 1000 Mbps Fast Ethernet.

## Functions

Monitoring	Analyzing
Network packets	Email messages
Email communications	Web accesses
Web accesses	Network transactions
Network transactions	Reconstruction of TCP stream
Network traffic	Packet decoding and protocol analysis
Real-time monitoring	
Monitoring with filters	
Statistics	Auditing
Network traffic	Archiving Email messages
Network speed	Logging Web accesses
	Logging network transactions

## System requirements

- PIII 500 CPU
- 128 MB RAM
- 5 MB of free disk space
- At least one available Ethernet or wireless network adapter connected to IP network
- Windows NT/2000/XP: Requires Windows 2000/XP/2003 (or Windows NT 4.0 with Service Pack 3)
- Windows 95/98/ME: Requires Windows 98/ME (or Windows 95 with Internet Explorer 3.0 or later)

# Features and Benefits

## Prominent functions - instant network analysis and packet decoding

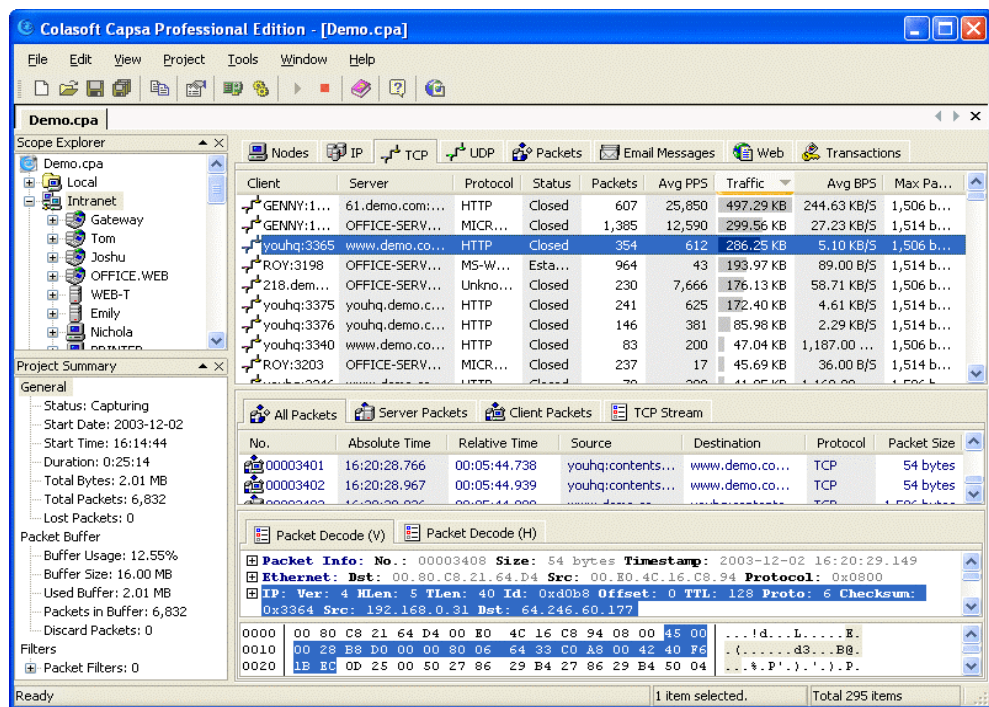
- Most network infrastructures supported.
- Real-time monitoring and packet decoding and exact data display enable quick network bottle-neck location.
- Accurate timestamp; records data by millisecond.
- High efficiency – captures and analyzes data in 10/100/1000M Ethernet exactly and instantly.
- Specific statistics of network traffic on nodes.
- Detailed statistics of network speed on nodes.
- Focuses on network application layer, having three advanced analysis modules.
- Powerful and flexible filters – four filter types; supports two levels of filter setting and three kinds of filter logic; supports filter duplication, instant activation of filter generation and filter application.

## Extremely easy to use – you can master it in few minutes

- Rational framework and intuitive display.
- Supports multi-projects, multi-views and multi-windows.
- Operation is flexible and simple.
- Supports result sorting; convenient for data comparison and analysis.

## Stable performance and low price

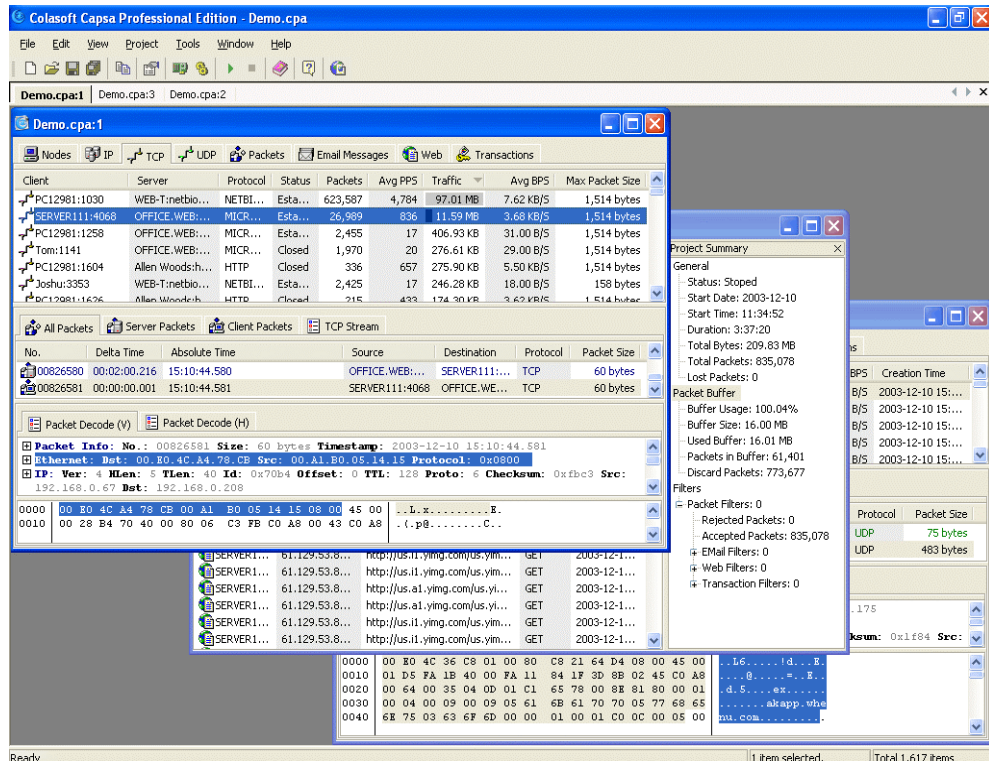
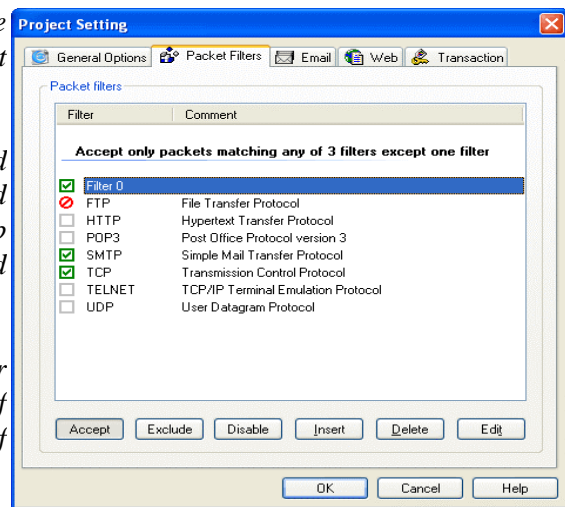
- Runs stably on nearly all Windows platforms.
- No lost packets.
- Low usage cost – no other hardware or software required.



*Real-time monitoring, real-time packet capture and decoding, exact analyzed result.*

*Four analysis modules: standard Packet Analysis Module, advanced Email Analysis Module, Web Analysis Module and Transaction Analysis Module.*

*Functional yet flexible filters: four filter types, supports two levels of filter setting and three kinds of filter logic.*



*Multi-projects, multi-views and multi-windows: operation is flexible and simple.*

# Constitution and Analysis Modules

## Real-time monitoring and analysis

Packet Analyzer captures network communication information in real time; network scopes cover from 10/100 Mbps to the newest 1,000 Mbps.

Packet Analyzer decodes packets and shows analyzed data in HEX and ASCII accurately by millisecond. Because traffic statistics can be seen on all nodes and sorted, administrators can diagnose network problems more easily and efficiently.

## Restructured TCP stream

The TCP data stream is important in Packet Analyzer analyzed result. Initial information can be recovered from data fragments by restructuring packets. Analysts can see, from the TCP Stream View, the session and response between Client and Server and the real data information received and sent by the Client or the Server, enabling them to see the actual operation of network.

## Multilevel filters

Packet Analyzer filters are separated into two levels: Level 1: Packet Filter - applicable in packet capture.

Level 2: Email Filter, Web Filter and Transaction Filter - included in the corresponding advanced analysis module.

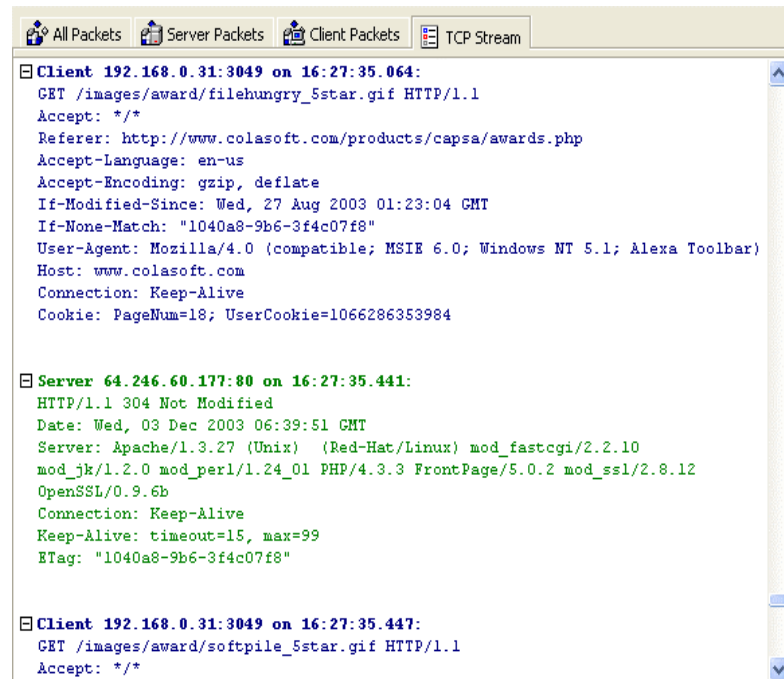
Though very functional, Packet Analyzer filters are really flexible. They not only support multiple filters working simultaneously, but also involve three kinds of logic, enabling you to filter data more precisely.

Furthermore, Packet Analyzer allows filter duplication, instant filter generation, automatic filter creation by captured data, and many other functions.

## Email Analysis Module

- Monitors and analyzes emails in LAN.
- Reverts email message information and shows real content, including sender, recipient, subject, size, protocol, email client, client, server, account, captured time, file path, etc.
- Automatically logs and saves copy of

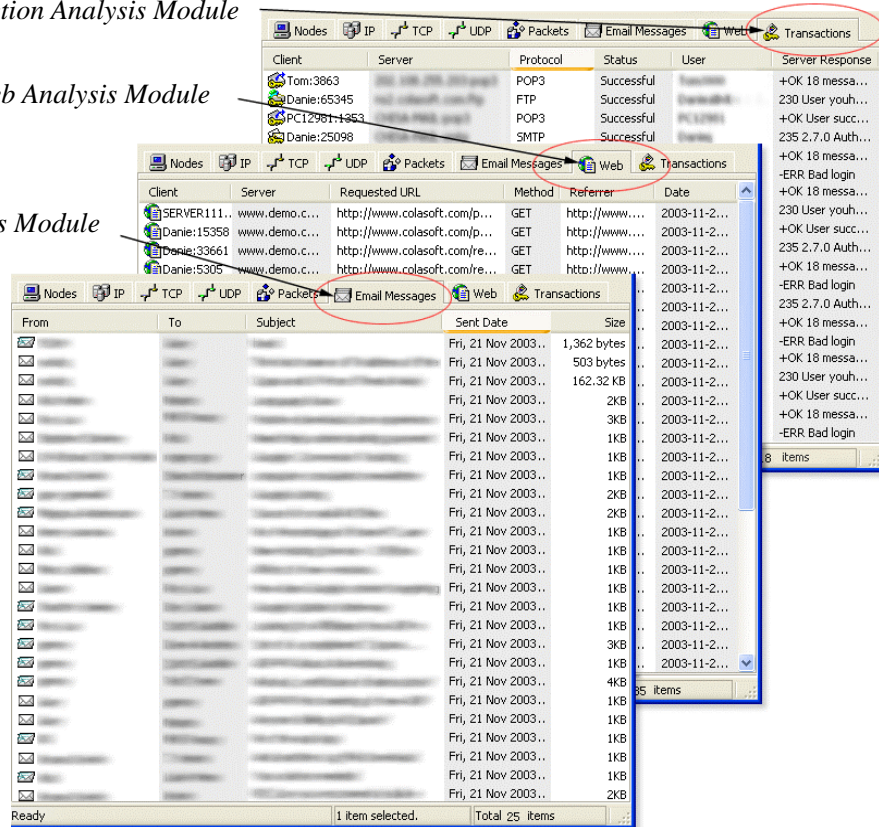
*Restructures TCP Stream and reverts captured packets to raw*



## Transaction Analysis Module

## Web Analysis Module

## Email Analysis Module



## Web Analysis Module

- Monitors and analyzes Web accesses in LAN, including dynamic and static websites, pictures and other HTML web pages.
- Records and displays detailed information of Web accesses, such as client, server, requested URL, method, User Agent, referrer, status code and server response, etc.
- Automatically generates and saves Web access log files to designated location.

## Transaction Analysis Module

- Monitors and analyzes transactions in the LAN, supports SMTP, Telnet, HTTP, POP3, and FTP.
- Records and shows transaction information, including client, server, protocols, status, user name, password, captured time, count and server response.
- Automatically generates and saves transaction log files.

## About Javvin

Javvin is a professional software developer committed to providing network maintenance and management applications and solutions.

Our mission is to provide corporate developers, networks administrators, and IT professionals with high quality, cutting-edge technologies and products in order to improve the management of networks.

Efficiency and practicality are the principles of Javvin product design. Javvin offers inexpensive, easy to operate software with powerful functions. We also cooperate with partners worldwide in endeavoring to work out better ways of ensuring network security and stability.

For more product information, visit <http://www.Javvin.com/packet.html>

### **Javvin Technologies, Inc.**

13485 Old Oak Way, Saratoga CA 95070 USA

**Tel:** 408-872-3881

**Email:** [help@javvin.com](mailto:help@javvin.com)  
[support@javvin.com](mailto:support@javvin.com)